

Community Plans and Priorities for 2020

IAM Online

Wednesday, February 12, 2020

Moderator:

Kevin Morooney, Vice President for Trust and Identity Services and NET+, Internet2

Presenters:

David Bantz, University of Alaska (CTAB)

Janemarie Duh, Lafayette College (TAC)

Tom Jordan, University of Wisconsin-Madison (CACTI)



About InCommon

Federation

**Community
Development**

eduroam

Software
Trusted Access Platform
(follow-on to TIER)

**Education &
Consulting**

**Certificate
Services**

**Trust & Identity Division
and InCommon**

Community Governance

Program Advisory Group (PAG)

Provides community input and guidance to T&I programs and services.

Representatives from InCommon Steering, I2 TIER Community Investor Council, and CACTI.

InCommon Steering Committee

- Governs InCommon LLC affairs
- Promotes InCommon mission
- Establishes policies
- Delegates authorities
- Advises Operations Unit

**Research and Education FEDerations
(REFEDS)**

eduGAIN Steering Group

Sustaining Advisory Committees

Community Architecture Committee for Trust and Identity (CACTI)

Standing architecture strategy group of community members. Provides strategic architectural input, manage and evolve community standards.

eduroam-US Advisory Committee (eAC)

Advisory body to CACTI & Internet2 to formulate strategies and practices for US & global research and education roaming networks.

Technical Advisory Committee (TAC)

Community advisory to InCommon's operational processes and practices, strategies, capabilities, and roadmap

Community Trust and Assurance Board

CTAB shepherds community consensus on trust and assurance related issues.

Current Community Working Groups

Trusted Access Platform Software Integration WG

Banner Integration WG - Matthew Brookover

Component Architects WG

BTAA and TIER Collaboration on Provisioning and De-Provisioning WG - Keith Wessel

Groupier WG - Chris Hyzer

IdP as a Service (IdPaaS) WG - Mary McKee, E.J. Monti

OIDC-OAuth Deployment WG - Nathan Dors

Federation 2.0 WG

SIRTFI

OIDCre WG

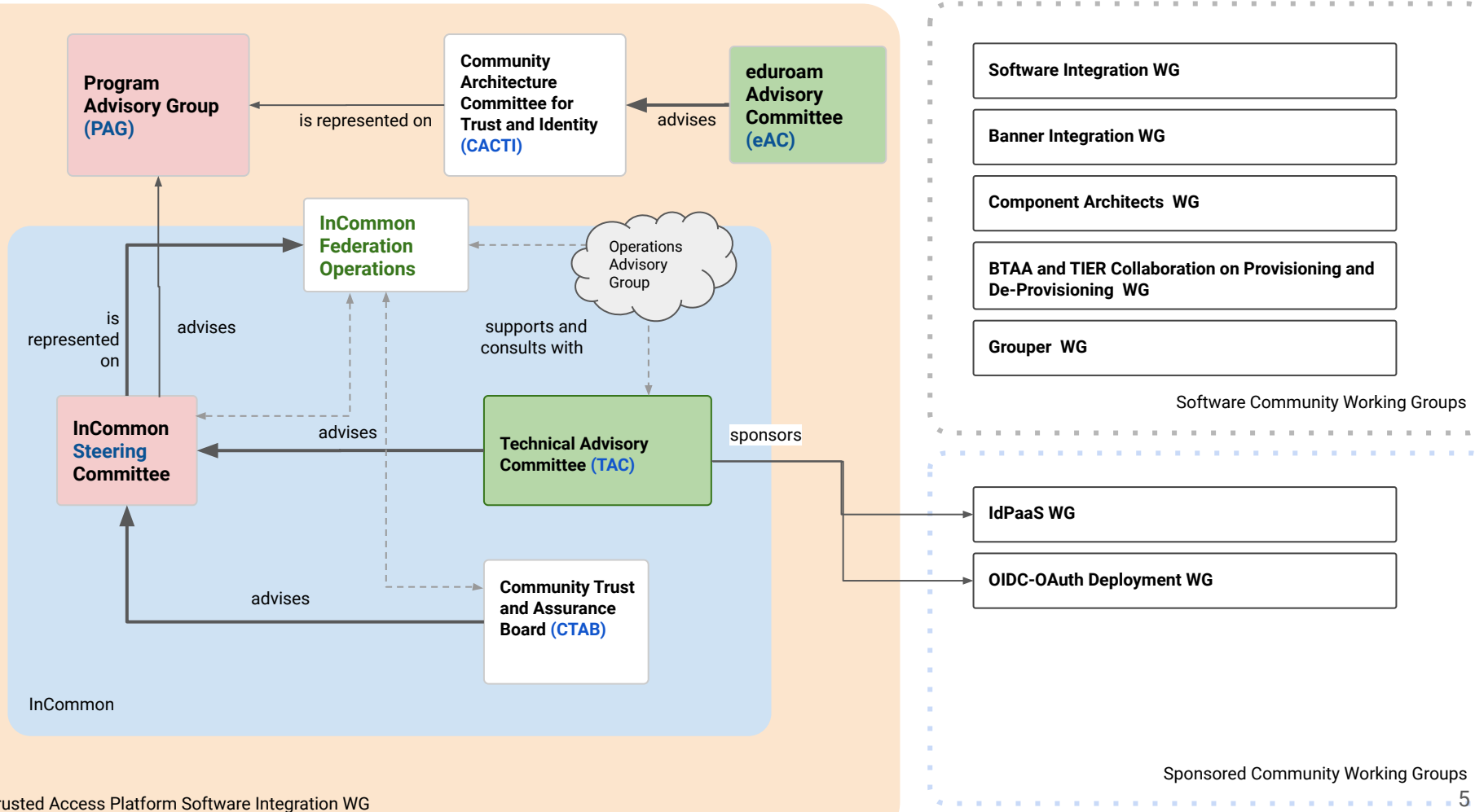
IoLR WG

Entity Category Dev WG

Assurance WG

International Activities









InCommon Community Trust and Assurance Board (CTAB)

David Bantz (University of Alaska), Chair

InCommon Community Trust and Assurance Board (CTAB)

David Bantz, University of Alaska (*chair*)

Mary Catherine Martinez, InnoSoft (*vice chair*)

Pål Axelsson, SUNET

Rachana Ananthkrishnan, Globus, University of Chicago

Tom Barton, University Chicago and Internet2, *ex-officio*

Brett Bieber, University of Nebraska

Brad Christ, Eastern Washington University,
InCommon Steering rep

Ercan Elibol, Florida Polytechnic University

Richard Frovarp, North Dakota State

Eric Goodman, UCOP, *InCommon TAC rep*

Chris Hable, University of Michigan

Jon Miner, University of Wisconsin-Madison

John Pfeifer, University of Maryland

Chris Whalen, Research Data and Communication Technologies

Jule Ziegler, Leibniz Supercomputing Centre

Robert Zybeck, Portland Community College

Jessica Coltrin, Internet2

Emily Eisbruch, Internet2

Ann West, Internet2

Albert Wu, Internet2

InCommon's Baseline Expectations program



Participation Agreement

requires everyone to adhere to
Baseline Expectations

Dimensions

- Security
- Privacy
- Transparency/Accountability
- User Experience
- Facilitate federated access

Processes

- Community Requirements
- Community Consensus
- Community Dispute Resolution

*Mostly, it consists of tons of **communication and help***

Collaboration

Attribute bundle(s)

Interoperability

MFA signaling

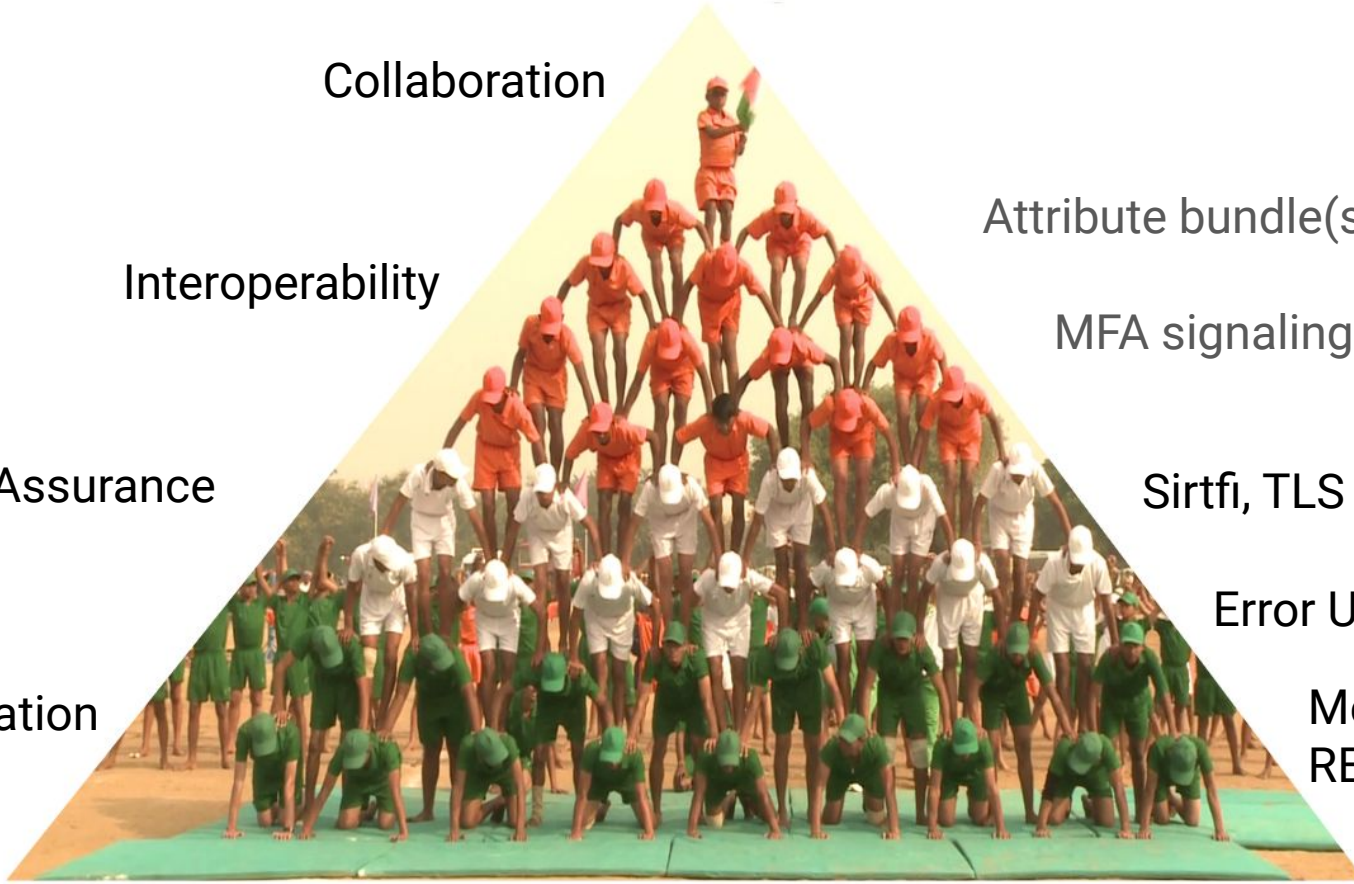
Assurance

Sirtfi, TLS

Error URL

Foundation

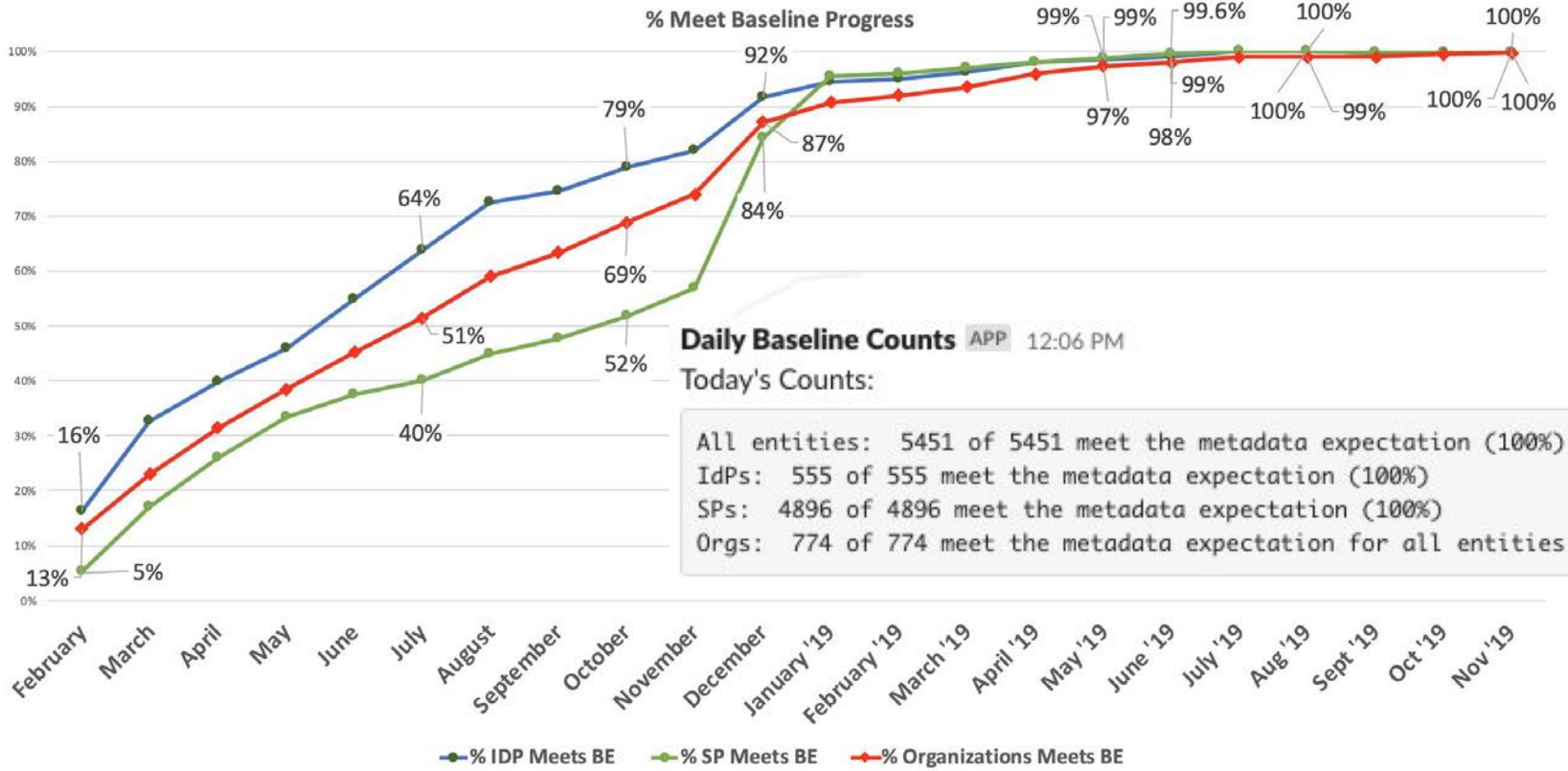
Metadata useful;
REFEDS Assurance



Baseline Expectations v1 (2018-2019)

1. Operated as core institutional service: Organizational-level authority, generally accepted security practices, accurate metadata
2. Technical, admin, and security contacts, MDUI information, and privacy policy URL
3. Attributes required to obtain service are appropriate and made known publicly
4. SP uses user info only for access and authorization (not shared)
5. Logos

Implementing Baseline Expectations 2018-2019



Next Steps? Baseline Expectations 2020-2021

Community members have advocated for these potential components of BEv2:

TLS: hardening for all endpoints

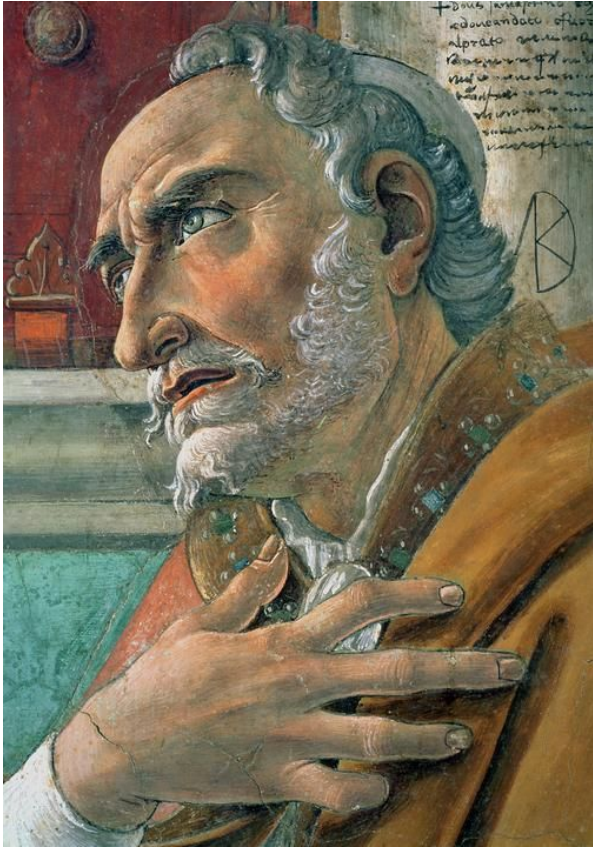
Sirtfi: self-evaluation and assertion of conformance*

errorURL: in IdP metadata (refer if SP doesn't receive needed attributes)

MFA: signaling using REFEDS MFA authentication context

R&S and/or other standard *attribute bundles*

* Security Incident Response Trust Framework for Federated Identity <https://refeds.org/sirtfi>



“...make me pure...but not yet!”
St. Augustine

	Prioritize	In 2021
Encrypt Endpoint with TLS	46	26
Support Sirtfi	32	43
Require error URL	36	38
Release R&S Attributes	28	33
Support REFEDS MFA Profile	29	34

Community Consensus

1. Community Trust and Assurance Board (CTAB) facilitates broad discussion (1 March - 15 April)
2. Dedicate email list (discuss) and wiki (document)
3. Discern “rough consensus” (per <https://tools.ietf.org/html/rfc7282>)
4. Consultation process to adopt consensus BE v2
5. CTAB Facilitates adoption by all InC participants

WE WANT TO HEAR FROM YOU!

David St. Pierre Bantz
Chair, CTAB
Q@alaska.edu



InCommon Technical Advisory Committee (TAC)

Janemarie Duh, Lafayette College), Chair



TAC 2020 Work Plan Themes

- Make federation easier by lowering the barriers to getting on the federation highway
 - For institutions that are unable or unwilling to run their own IdPs
 - For SPs wanting to join InCommon
- Increase the value of participation InCommon
 - Increase value proposition
 - Which wants and needs are valuable to the most people?
 - Solving the business case

TAC 2020 Work Plan Preview

- Test federation
 - A sandbox for the community (Participant IdP and SP orgs and possibly others)
- [Cloud Services Cookbook](#)
 - Updates to reflect the current landscape
- IdP as a Service
 - Follow-on work recommendations from the [IdPaaS Working Group](#)
- [Seamless Access](#) adoption
 - Federated identity for library subscription content from publishers

TAC minutes are [public on the wiki](#)



Community Architecture Committee for Trust and Identity (CACTI)

Tom Jordan (University of Wisconsin-Madison), Chair

Community Architecture Committee for Trust and Identity (CACTI)

CIO Perspective

Describe **value proposition** for Federations and the Trusted Access Platform

Engage the security community to demonstrate where InCommon and TAP fit in a campus **security strategy**.

CISO Perspective

IAM Hiring Managers

Build out community resources for **recruiting and onboarding** IAM talent

Identify / define some quick start **guides and playbooks** for solving IAM problems with InCommon Trusted Access Platform software and federation

IAM Implementers



Upcoming InCommon Events

Shibboleth Installation Workshop - March 17-18 - Houston, Texas

Grouper School - April 29-30 - Greensboro, North Carolina

InCommon BaseCAMP - June 23-25 - Milwaukee, Wisconsin

For those new to IAM, Federation, and/or the InCommon Trusted Access Platform

<https://meetings.internet2.edu/2020-basecamp/>

For details on all events, go to incommon.org

IAM Online Evaluation

<https://www.surveymonkey.com/r/IAMOnline-Feb2020>