

# Baseline Expectations 2020: Continuing to Raise the Bar

IAM Online

Wednesday, December 4, 2019

David Bantz, University of Alaska

Albert Wu, Internet2/InCommon



| InCommon®

# Baseline Expectations for Federation Participants

1. Describe the Program  
goals and process
2. Current State
3. Next Steps

# CTAB: Community Trust & Assurance Board

Mary-Catherine Martinez, Chair	InnoSoft
Rachana Ananthakrishnan	Globus/University of Chicago
Brett Bieber	University of Nebraska-Lincoln
David Bantz, Vice-Chair	University of Alaska
Chris Hable	University of Michigan
John Hover	Brookhaven National Laboratory
Adam Lewenberg	Stanford University
Jon Miner	University of Wisconsin-Madison
John Pfeifer	University of Maryland, College Park
Chris Whalen	Research Data and Communication Technologies
Tom Barton	University of Chicago
Brad Christ	Eastern Washington University
Albert Wu	Internet2 (non-voting)
Ann West	Internet2 (non-voting)



InCommon®

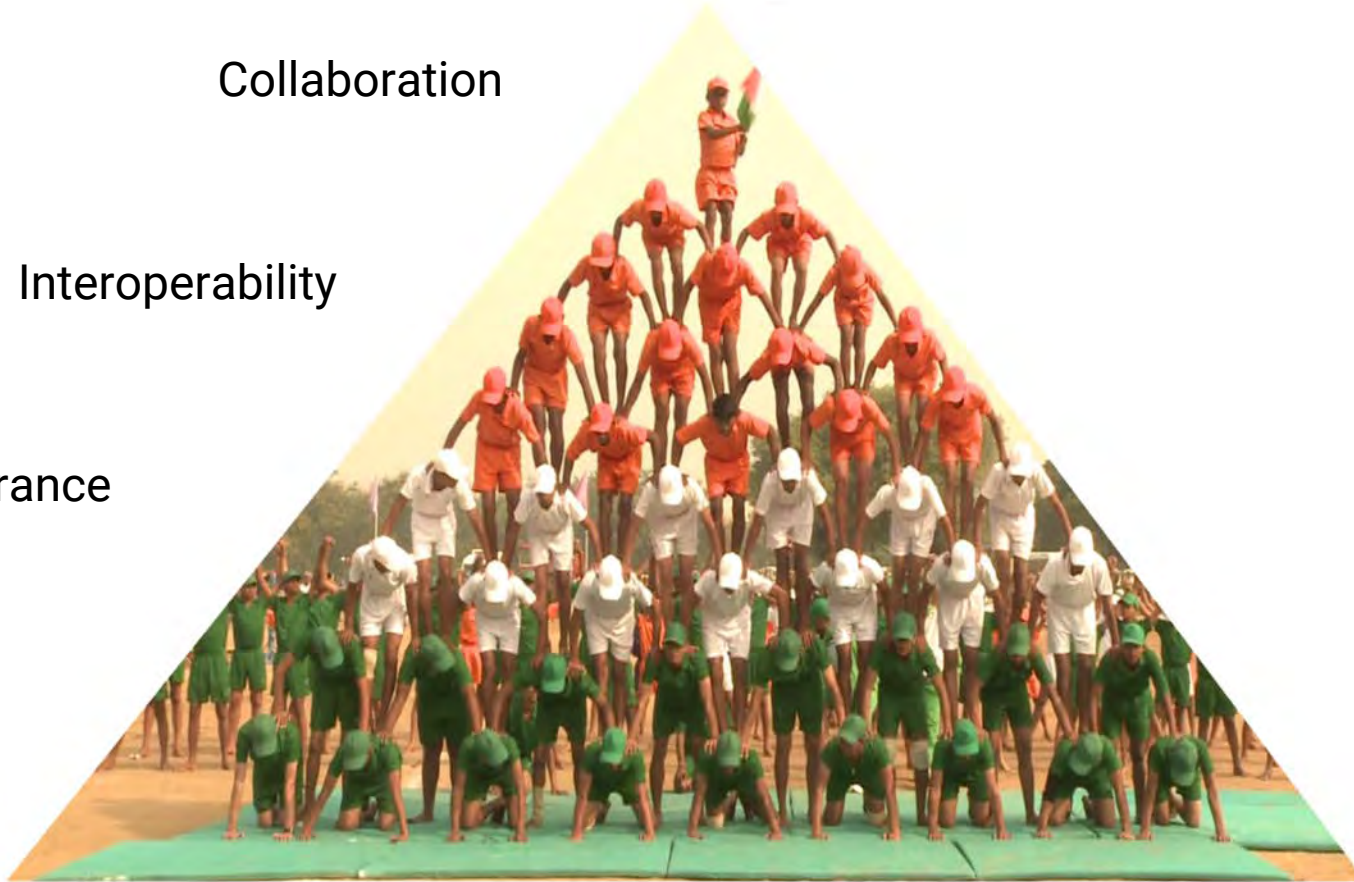
<https://incommon.org/community/leadership/>

Collaboration

Interoperability

Assurance

Foundation



# InCommon's Baseline Expectations program



## Participation Agreement

requires everyone to adhere to  
Baseline Expectations

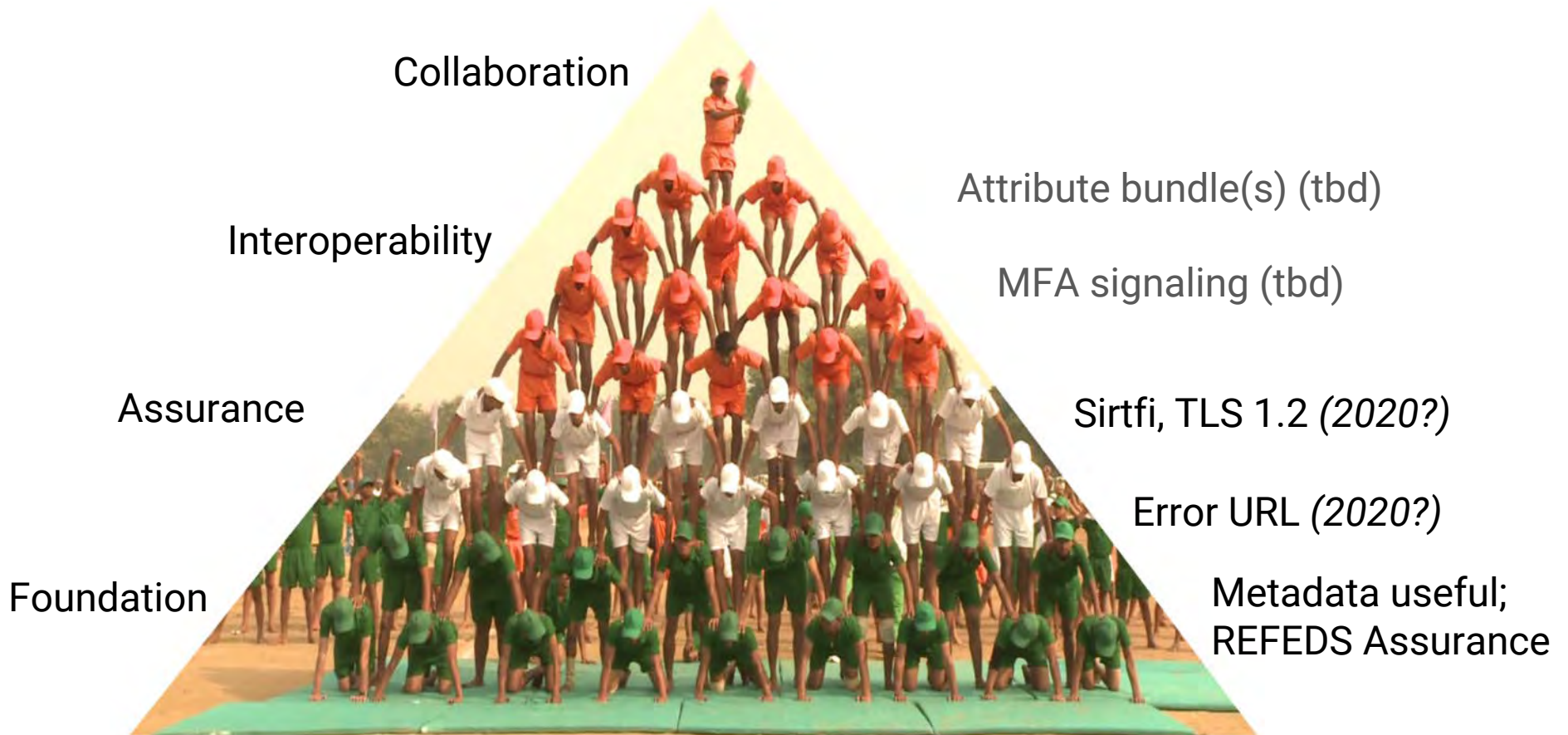
## Dimensions

- Security
- Privacy
- Transparency/Accountability
- User Experience
- Facilitate federated access

## Processes

- Community Requirements
- Community Consensus
- Community Dispute Resolution

*Mostly, it consists of tons of **communication and help***





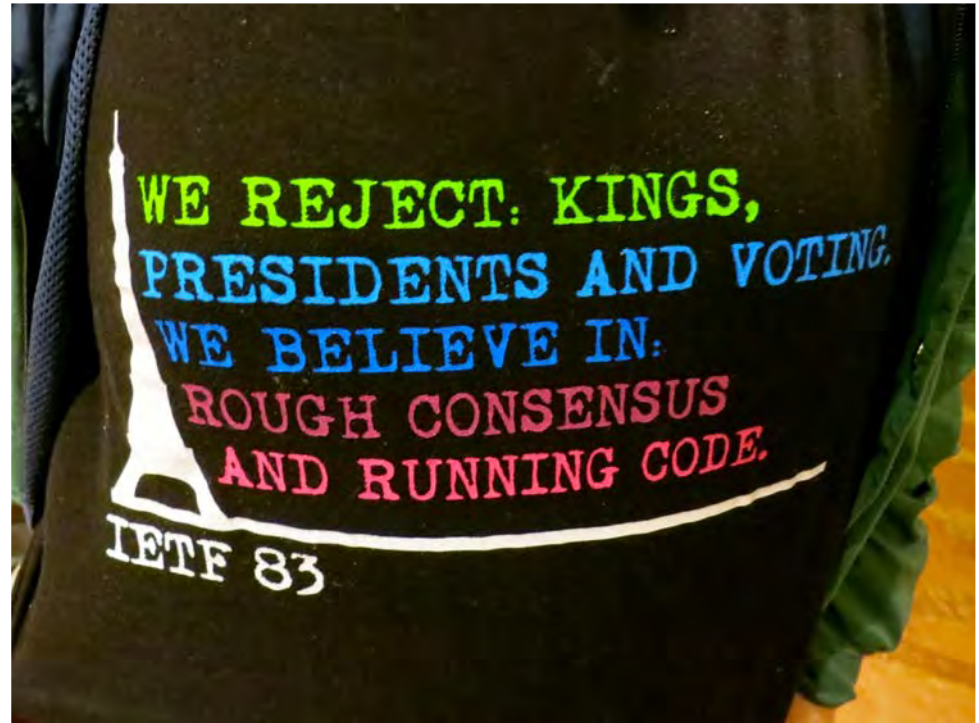
## Federation Participants

- Research SPs
  - University IdPs
  - Vendor SPs
  -
- “share the road”

# Community Consensus

1. Raise an issue on [technical-discuss@incommon.org](mailto:technical-discuss@incommon.org) or [participants@incommon.org](mailto:participants@incommon.org)
2. Community Trust and Assurance Board (CTAB) facilitates discussion, calling in subject matter experts, stakeholders, and others
3. Aim for consensus  
“Rough Consensus” per <https://tools.ietf.org/html/rfc7282>

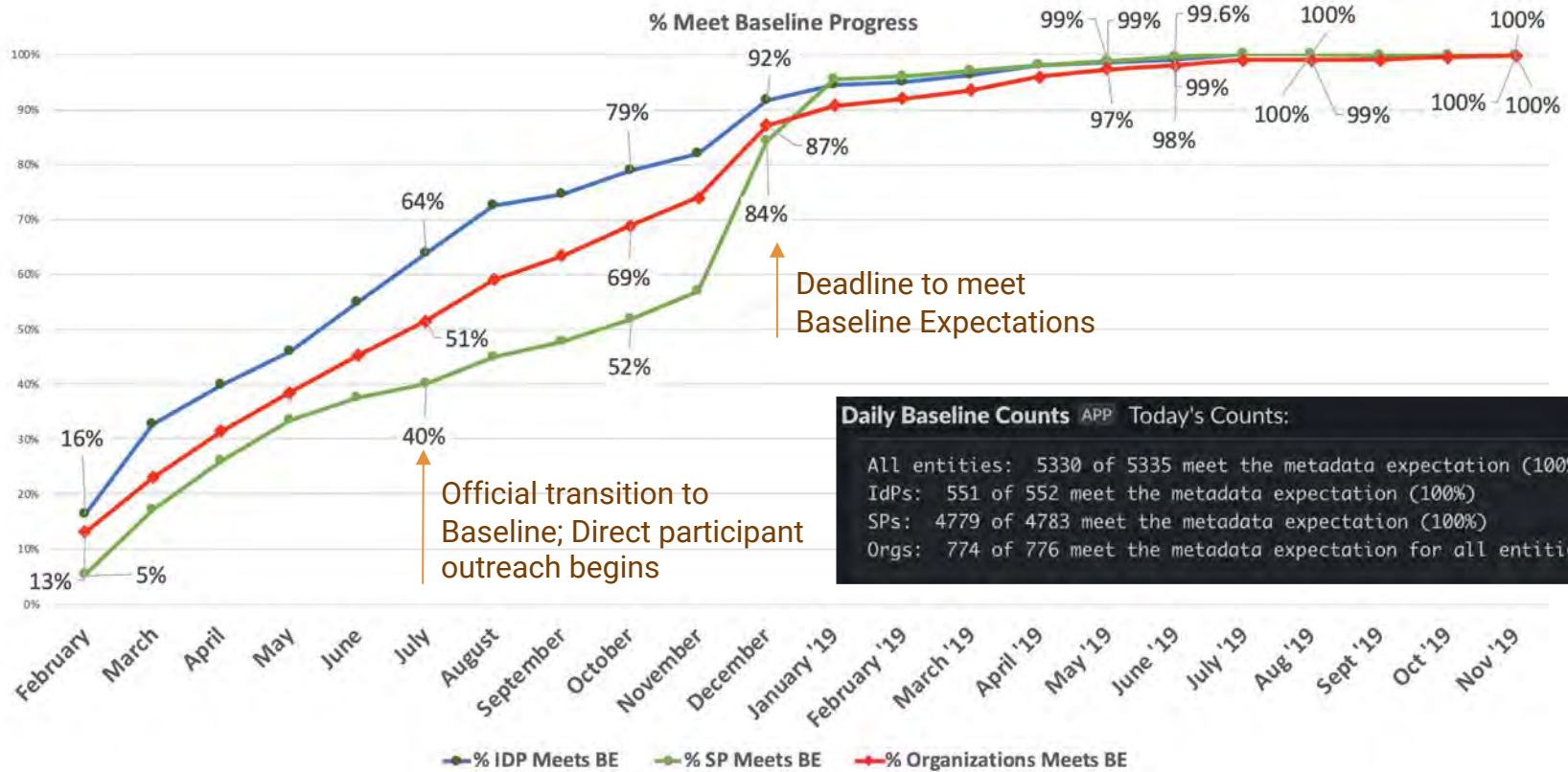




# Baseline Expectations v1 (2018-2019)

1. Operated as core institutional service: Organizational-level authority, generally accepted security practices, accurate metadata
2. Technical, admin, and security contacts, MDUI information, and privacy policy URL
3. Attributes required to obtain service are appropriate and made known publicly
4. SP uses user info only for access and authorization (not shared)
5. Logos

# Implementing Baseline Expectations 2018-2019



## *Benefits* of implementing BE requirements:

Federation maturity - with base of uniform sound operating principles

- Confidence in relying on federation rather than 1:1 integrations
- Exercise consensus & dispute resolution processes (speaks to stability)

Spur to other national/international identity federations

- Or eduGAIN?

Contribute to efficiency of on-boarding (SP / IdP interaction)

Model even for non-federated entities

("Your SP should adhere to BE as good practices!")



| InCommon®

# Next Steps? Baseline Expectations 2020

*Community members have advocated for these potential components of BE2020:*

**TLS:** hardening for all endpoints

**Sirtfi:** self-evaluation and assertion of conformance\*

**errorURL:** in IdP metadata (refer if SP doesn't receive needed attributes)

**MFA:** signaling using REFEDS MFA authentication context

**R&S** and/or other standard *attribute bundles*

\* Security Incident Response Trust Framework for Federated Identity <https://refeds.org/sirtfi>

## Managing Risks (weak trust vs burdensome requirements)



# Survey: possible components of BE 2020

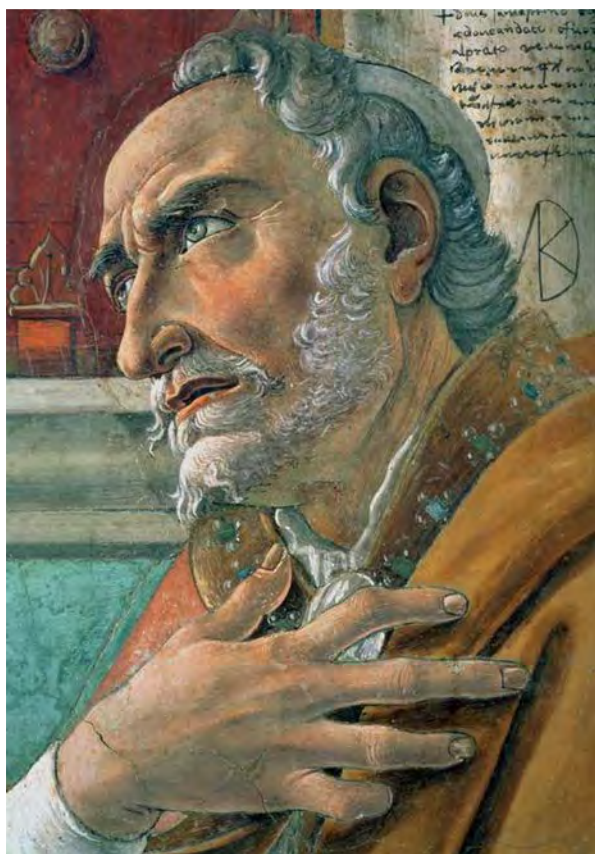
(87 responses)	Prioritize
TLS 1.2 +	46
SIRTFI	32
error URL	36
R&S attr.	28
REFEDS MFA	29

## Survey summary details:

<https://www.incommon.org/news/baseline-expectations-survey-summary/>

(87 responses)	Prioritize	Y 2021	pos "O"	neg "O"	P+Y/2+pos-negO
TLS 1.2 +	46	26	7	3	63.0
SIRTFI	32	43	3	4	52.5
error URL	36	38	3	7	51.0
R&S attr.	28	33	11	11	44.5
REFEDS MFA	29	34	7	11	42.0





“...make me pure...but not yet!”  
St. Augustine

	Prioritize	In 2021
Encrypt Endpoint with TLS	46	26
Support Sirtfi	32	43
Require error URL	36	38
Release R&S Attributes	28	33
Support REFEDS MFA Profile	29	34

## Some possible next steps...*What do you think?*

1. BE 2020 Community Consensus to determine components:  
TLS, errorURL, Sirtfi, MFA signalling, attribute bundle(s)?
2. Increase collaboration and common BE in other federations?  
In eduGAIN?
3. Automated checks to ensure that contact information, UI elements and other aspects of metadata are accurate and complete?
4. **CTAB Open Meeting @ TechEx 12 - 1:40 pm Wednesday 11 Dec**

# Resources

- Baseline Expectations for Trust in Federation website  
<https://www.incommon.org/federation/baseline>
- Baseline Expectations for Trust in Federation document  
<http://doi.org/10.26869/TI.34.1>
- Community Consensus Process  
<http://doi.org/10.26869/TI.107.1>
- Community Dispute Resolution Process  
<http://doi.org/10.26869/TI.118.1>
- InCommon Baseline Expectations: Designing How to Transition the Community  
<http://doi.org/10.26869/TI.120.1>
- Survey summary details: <https://www.incommon.org/news/baseline-expectations-survey-summary/>

Please evaluate today's session

<https://www.surveymonkey.com/r/IAMOnline-Dec2019>



| InCommon®